

# ROUTE DESCRIPTION - MCBRIDES' CAMP

## ***McBrides' Camp - Kafue National Park, Zambia***

### ***North East section of the Kafue National Park – Eastern bank of the Kafue River***

**TRAVEL DIRECTIONS - Enjoy the journey, travel well and we look forward to welcoming you!**

#### **Transfer**

Transfers by car from Lusaka or Nalusanga gate to the lodge can be organized by McBrides' Camp. Pick up from any location in Lusaka to our camp in the Kafue National Park, (inquire for rates). Transfer time car from Lusaka to McBrides' Camp 5 ½ hours.

#### **By Bus**

Intercity-bus departure from Lusaka Intercity bus terminus, Dedan Kimathi Rd, Kamwala; Daily service: Lusaka to Mongu at 13:30.

Direction Mongu; exit at Nalusanga gate; pick up and transfer by McBrides' Camp via New Access road through the Kafue National Park. Transfer time coach from Lusaka to Nalusanga: 3 hours, then transfer from Nalusanga to McBrides' Camp: 2 hours. Total travelling time about 5 hours.

#### **Self-Drive**

These are dry season instructions (May-November), please ask us for current information if driving at any other time of year.

Kindly note that in the interim you will not find our new access road on most maps (also not tracks4africa yet) only on Map.me you will find the first part on this dirt road. For this reason, it is not advisable to use Google Maps instructions to get to us. Please ensure you drive via either Mumbwa (d181) to Lubungu Pontoon or via our new access road.

#### **From Lusaka (5-6 hours)**

Drive to the west on the (M9) toward Mong towards Mumbwa.

*Option 1 – D181 toward Kasempa (3,5hrs):* When you arrive in Mumbwa you drive into town, at the Total filling station roundabout you take the first exit. After a few meters the tar turns into a gravel road. You follow this gravel road for about 1 to 2 km. You turn right on a big gravel road. You follow this road for about 90 km. Ten km before the Lubungu pontoon (which crosses the Kafue River) you see our signpost. From there it is about 17 km to camp.

*Option 2 – New access road from the M9 (2,5 hrs).* You can also choose to follow the M9 until about 15 min after the Nalusanga gate, 2 km before the Itehi Tezhi turnoff there is a dirt road to the right/ north.

#### **DIRT ROAD/ NEW ROAD DESCRIPTION**

- Starting point dirt road going North - GPS coordinate: S14.970397- E026.468993.
- Once on the dirt road after 0,6 km there is a V, keep right.
- After 3 km there is another V, go left.
- After 29,1 km keep right on the main road
- After 1,3 km, there is a small gally.
- After 7,4 km you have to cross a dry riverbed, go left after this.
- After 0,9 km: follow the yellow arrow to McBrides' Camp

### **From Hookbrigde (3 hours)**

Coming from hook bridge you drive in the direction of Lusaka. Two km after the turnoff toward Itezhi Tezhi town there are two dirt road exits, on the south (right) and on to the North (left). You can see our signpost there, turn to the left.

#### **DIRT ROAD/ NEW ROAD DESCRIPTION**

- Starting point dirt road going North - GPS coordinate: S14.970397- E026.468993.
- Once on the dirt road after 0,6 km there is a V, keep right.
- After 3 km there is another V, go left.
- After 29,1 km keep right on the main road
- After 1,3 km, there is a small gally.
- After 7,4 km you must cross a dry riverbed, go left after this.

After 0,9 km: follow the yellow arrow to McBrides' Camp

### **From Kasempa (5 hours)**

From Kasempa you follow the d181 toward Mumbwa. Bear in mind you need to cross to pontoons. One is the Lungu Pontoon, and the second one is the Lubungu pontoon. Unfortunately, the reliability of these pontoons is not 100%, sometime engines break down and spare parts are not always immediately available. This might delay your travel a bit. Ten kilometres after the Lubungu Pontoon there will be signpost in a sharp curve in the road on your right sight. Here you find our McBrides' Camp sign. From here it is about 17 km drive to camp.

### **From Mongu/Kaoma (6-8 hours)**

From west of Kaoma to the Tateyoyo Gate is slow due to a degraded M9. Follow the M9 in direction of Mumbwa. Once you arrive at Hookbridge you follow the hookbridge route description.

### **From the Great North Road (7-8)**

Turn towards Mumbwa at Landless Corner. The middle section of the road is now graded so the drive is much easier. From Mumbwa follow either option 1 or option 2 mentioned above.

### **From Livingstone (9-11 hours)**

Depending on current road conditions there are different options to get to McBrides' Camp from Livingstone; for both directions it is advisable to overnight in Itezhi-tezhi or have a break at Nanzhila, Choma or in Itezhi tezhi. Do not attempt without lots of fuel, a high clearance 4x4 with low range, reasonable 4x4driving skills and a sense of adventure and humour! Be aware that before June the route through the park might be impassable or very challenging.

#### **1.LIVINGSTONE - KNP VIA DUNDUMWEZI GATE**

From Livingstone, take the T1 towards Lusaka. At Kalomo town (124km) (GPS: S17°01'45.6" E026°29'24.7") turn northwards towards the Dundumwezi entrance gate of the Kafue National Park. This is ±70km from Kalomo. Note!! Re-fuel at Kalomo as this is the last reliable fuel stop! From Dundumwezi, take the road to Ngoma, the southern HQ of the Kafue National Park. You will travel through the Nanzhila Plains along the "Cordon Road" (further west) or the Kalenje Road (eastern track) depending on the season and road conditions. Ask for information on specific directions and conditions at the entrance gate to the Park. From Ngoma, proceed North towards Lake Itezhi-tezhi.

From Itezhi – tezhi town you drive north (d769) until you hit the M9 you turn right toward Mumbwa. Two km after the turnoff from Itezhi Tezhi town there are two dirt road exits, on to the south (right) and on to the North (left). You can see our signpost there, turn to the left.

## 2.LIVINGSTONE – KNP VIA MUSA GATE

From Livingstone take the T1 until you reach Choma. Follow the road signs from Choma to Namwala; this road is tarred and in good condition after this you have to cover a heavily washed-out track to the pontoon (±10km; about 1 hour drive); from the pontoon use the most used track heading West to Itezhi-tezhi town.

From Itezhi – tezhi town you drive north (d769) until you hit the M9 you turn right toward Mumbwa. Two km after the turnoff from Itezhi Tezhi town there are two dirt road exits, one to the south (right) and one to the North (left). You can see our signpost there, turn to the left.

Attention: For 4x4s with high clearance only and only in the dry season (June-October); do not attempt this route without 'Tracks 4 Africa' (GPS map); involves a pontoon crossing;

### **Park opening hours**

Currently there is no gate entrance to our Camp. African Park is planning on creating a gate in 2025, therefore, we collect park fees on behalf of the DNWP. Our new access road is situated in the National Park, therefore park rules apply. The park opening hrs are between 06:00 - 18:00 hours, self driving within the park is only allowed between these operating hours, please make sure you arrive in camp before sunset

Please be informed that a transfer fee will be charged for a transfer vehicle to guide you to our camp when you arrive outside the above-mentioned operating hours.

### **Road Conditions**

The road condition on the d181 is a reasonable maintained gravel road, which is suitable for a high clearance 2x4. The last 17 km toward camp has some deep sand patches, therefore we advise a proper 4x4 of someone during the dry season.

For Self-Drives on the game loops a 4x4 vehicle is highly recommended throughout the whole year. Self-Drive loops are seasonal and only accessible between April/May - November.

Please note: the speed limit in the National Park is 40km/hr, the road is not well signposted and there are sudden bends and drifts (and animals) that can catch the unwary or those travelling too fast.

### **Fuel stations**

There are several fuel stations on the M9 just outside of Lusaka, Oryx is one of the last fuel stops between Lusaka and Mumbwa and has a small shop and a public toilet. Mumbwa is the first large town after Lusaka (and last opportunity to get fuel before getting to camp). Along the M9 there is Oil bay fuel station, in Mumbwa town, 3 km from the M( turn off) there are 3 more fuel stations.

Fuel occasionally runs out at filling stations and sometimes there is fuel but no power. Bear in mind you'll need enough fuel when planning to go on self-drives in the park. Distances add up quickly before reaching your next fuel station. Plan ahead and don't leave yourself short.

It is 150 kms from Lusaka and 120 kms from camp. Bear in mind in Mumbwa only Meru fuel station has card payment facilities if there is a network available. It is advisable to always bring some cash in case the network is not available to make card payments. There is an ABSA ATM at the car park of Choppies Supermarket and a FBZ bank.

Mumbwa town also has a market, several chemists, a butcher and many other small shops and a Choppies Supermarket.

### **By Air**

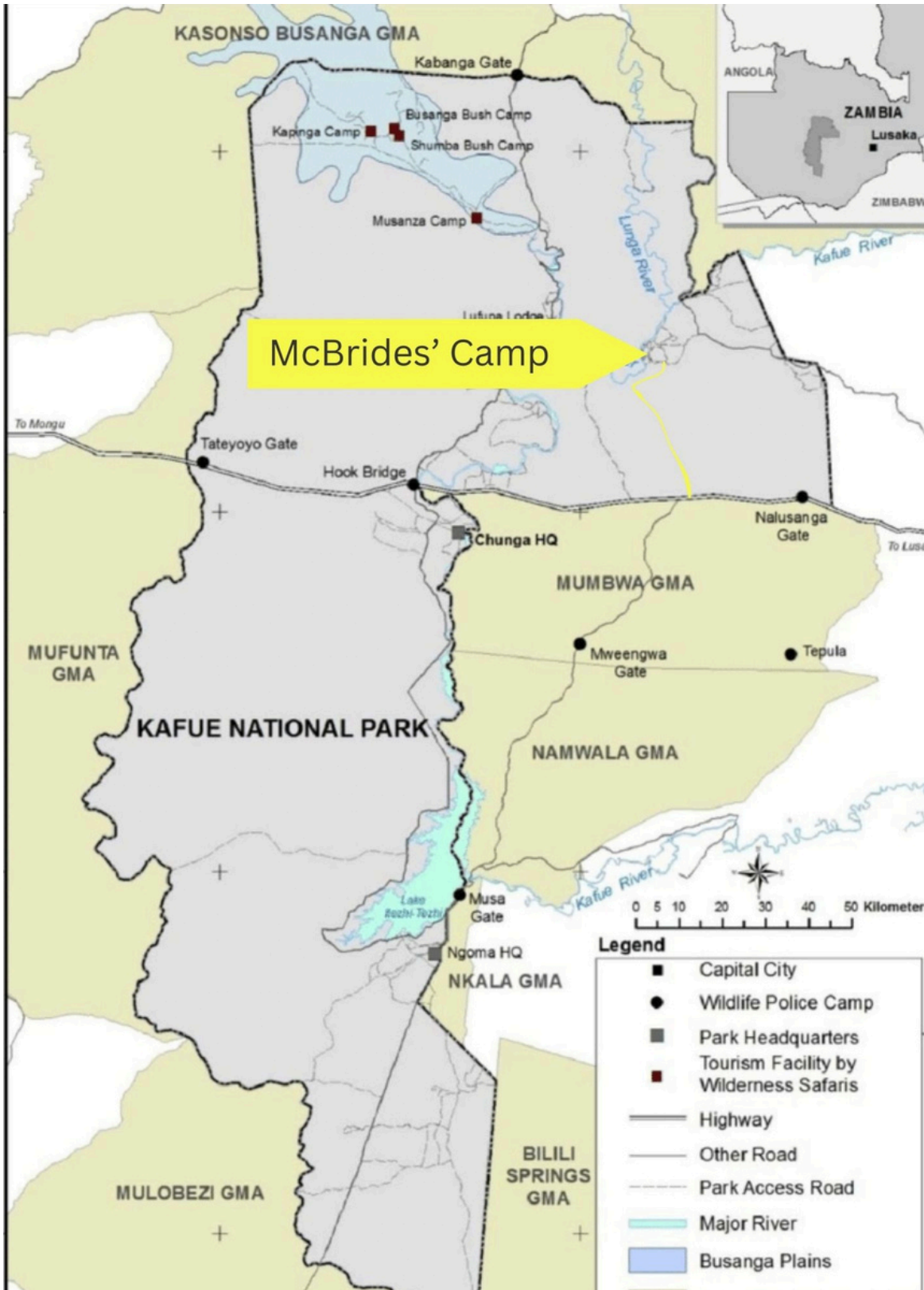
McBrides' Camp conveniently boasts its own airstrip, known as Hippo Airstrip, located just a 10-minute drive from our camp. Charter flights can be arranged through SkytrailsZambia or ProCharter. To inquire about rates, please get in touch with the airline providers.

# UNLOCK YOUR SAFARI DREAM

McBrides' Camp – Kafue National Park,  
Your Authentic Safari Heaven Closer Than You Imagine!"

Roadtransfer time:

- Lusaka 5 hrs
- Kasempa 5 hrs
- Solwezi 8 hrs
- Kitwe 11 Hrs



Contact  
For bookings please contact:  
[bookings@mcbriescamp.com](mailto:bookings@mcbriescamp.com)

Contact camp directly:  
[camp@mcbriescamp.com](mailto:camp@mcbriescamp.com)  
+26 077 350 7089 (only whats-app)